

## ! Before You Start

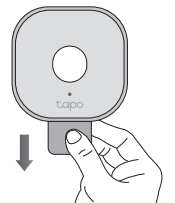
A Tapo Hub is required. Make sure your Tapo Hub is successfully added via the Tapo app.



## 1 Power Up Your Sensor

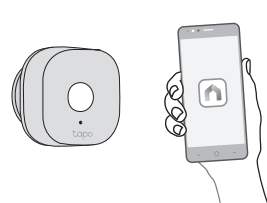
Remove the battery insulation tab to power up your sensor. The LED should blink.

Note: If the LED is not blinking, refer to the reverse side for reset instructions.



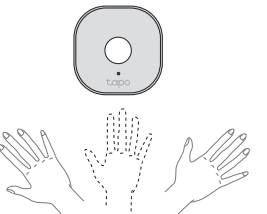
## 2 Set Up Your Sensor

Open the Tapo app and tap the ⊕ button. Select **Sensors** and then your model. Follow the app instructions to complete setup.



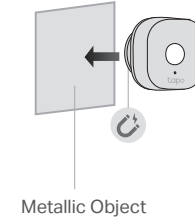
## 3 Test Your Sensor

Take your sensor to the preferred location and wave your hand in front of the sensor to test it. The Tapo app should show if the sensor is triggered.



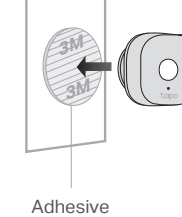
## 4 Place Your Sensor

Option 1:  
Magnetically attach to metallic objects



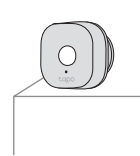
OR

Option 2:  
Stick to a clean wall with included adhesive



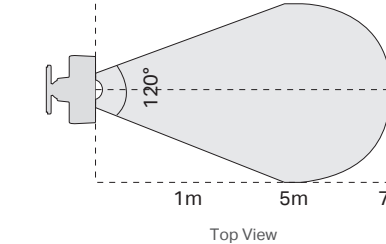
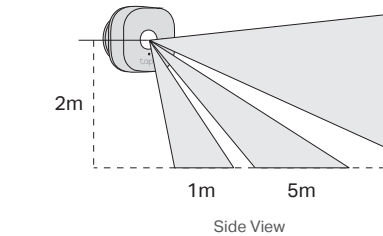
OR

Option 3:  
Place it on a shelf or table



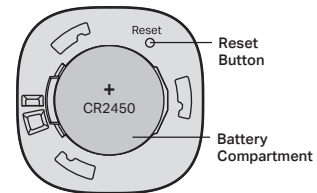
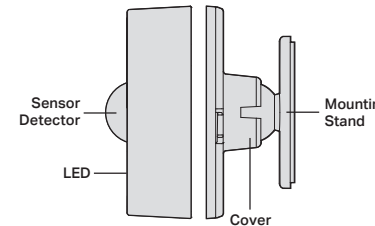
## ! Detection Area

The sensor should be aligned with the detection area and placed as close as possible to the edge of a table or cabinet. The installation height should not be higher than 2 meters.



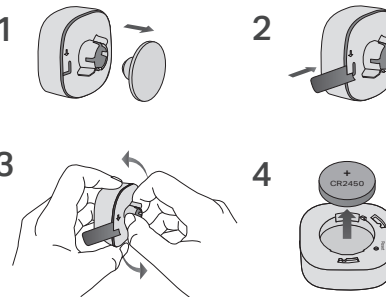
## Meet Your Motion Sensor

The Motion Sensor detects movement in a certain area and triggers different actions in response. This makes your home safer and smarter.

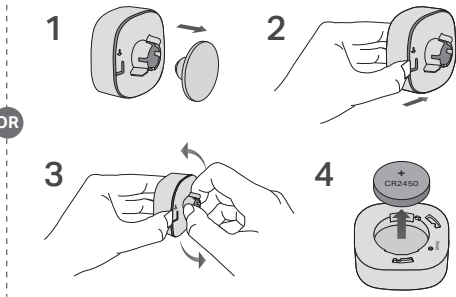


## How to replace the battery

### Option 1: With a Shim

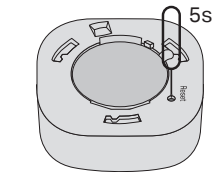


### Option 2: By Hand



## How to reset your sensor

Use a pin to press and hold the Reset button for 5 seconds until the front LED starts blinking.



## Need some help?

Visit [www.tapo.com/support/](http://www.tapo.com/support/) for technical support, user guides, FAQs, warranty & more



### Safety Information

Keep the device away from water, fire, humidity or hot environments. Do not attempt to disassemble, repair, or modify the device. If you need service, please contact us. Do not use the device where wireless devices are not allowed. Please read and follow the above safety information when operating the device. We cannot guarantee that no accidents or damage will occur due to improper use of the device. Please use this product with care and operate at your own risk. Do not ingest battery, Chemical Burn Hazard

This product contains a coin / button cell battery. If the coin / button cell battery is swallowed, it can cause severe internal burns in just 2 hours and can lead to death. Keep new and used batteries away from children. If the battery compartment does not close securely, stop using the product and keep it away from children. If you think batteries might have been swallowed or placed inside any part of the body, seek immediate medical attention. CAUTION!

Avoid replacement of a battery with an incorrect type that can defeat a safeguard. Avoid disposal of a battery into fire or a hot oven, or mechanically crushing or cutting of a battery, that can result in an explosion. Do not leave a battery in an extremely high temperature surrounding environment that can result in an explosion or the leakage of flammable liquid or gas; Do not leave a battery subjected to extremely low air pressure that may result in an explosion or the leakage of flammable liquid or gas.

For EU/UK Region:  
Operating Frequency / Nominal Operating Frequency / Max Output Power:  
863~865MHz / 863.35MHz / 25mW (e.r.p)  
863~865MHz / 864.35MHz / 25mW (e.r.p)  
868~868.6MHz / 868.35MHz / 25mW (e.r.p)

TP-Link hereby declares that the device is in compliance with the essential requirements and other relevant provisions of directives 2014/53/EU, 2009/125/EC, 2011/65/EU and (EU) 2015/863. The original EU declaration of conformity may be found at <https://www.tapo.com/en/support/ce/>

TP-Link hereby declares that the device is in compliance with the essential requirements and other relevant provisions of the Radio Equipment Regulations 2017. The original UK declaration of conformity may be found at <https://www.tapo.com/support/ukca/>

©2022 TP-Link



## Quick Start Guide

### Smart Motion Sensor

### Setup Video

Scan QR code or visit <https://www.tp-link.com/support/setup-video/#smart-sensors>



7106509752 REV1.2.1

Images may differ from actual products.