

Go to www.vtechphones.com to register your product for enhanced warranty support and the latest VTech product news.

DM1111 DM1111-2 Enhanced Range Digital Audio Monitor



vtech® User's manual



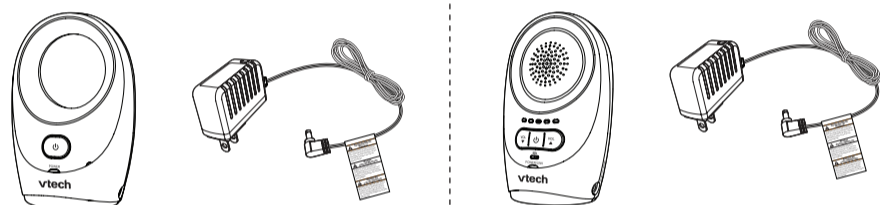
CONGRATULATIONS

on purchasing your new VTech product. Before using this product, please read **Important safety instructions**.

This manual has all the feature operations and troubleshooting necessary to install and operate your new VTech product. Please review this manual thoroughly to ensure proper installation and operation of this innovative and feature-rich VTech product.

For support, shopping, and everything new at VTech, visit our website at www.vtechphones.com.

WHAT'S IN THE BOX



1 set for DM1111
2 sets for DM1111-2

Specifications are subject to change without notice.
© 2018 VTech Communications, Inc.
All rights reserved. 11/18. DM1111-X-CIB_V4.0
Document order number: 91-010894-030-100



Frequency control	Crystal controlled PL synthesizer
Transmit frequency	Baby unit: 1921.536 - 1928.448 MHz Parent unit: 1921.536 - 1928.448 MHz
Channels	5
Nominal effective range	Maximum power allowed by FCC and IC. Actual operating range may vary according to environmental conditions at the time of use.
Power requirements	Baby unit adapter: Input: 100-120V AC 60Hz; Output: 5V DC @ 400mA Parent unit adapter: Input: 100-120V AC 60Hz; Output: 6V DC @ 400mA Parent unit battery: 2 X AAA alkaline batteries

TECHNICAL SPECIFICATIONS

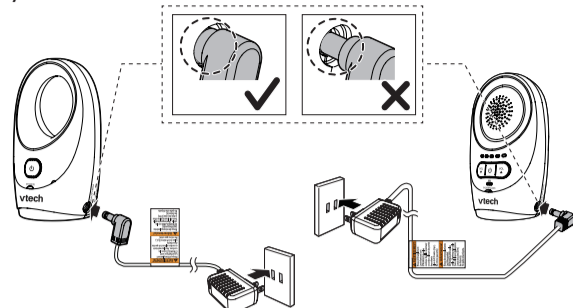
NOTE: Before calling for service, please review the user's manual - a check of the Product's controls and features may save you a service call.
Except as provided by applicable law, you assume the risk of loss or damage during transit and transportation and are responsible for delivery or handling charges incurred in the transport of the Product(s) to the service location. VTech will reimburse for delivery or handling charges under this limited warranty. Transportation, delivery or handling charges are prepaid. VTech assumes no risk for damage or loss of the Product in transit. If the Product is returned to VTech, you will receive a full refund of the purchase price of the Product. VTech will not be responsible for return shipping costs for the repair of Products that are not covered by this limited warranty.
What you return with the Product to get warranty service?
1. Return the entire original package and contents including the Product to the VTech service location along with a description of the malfunction or difficulty; and
2. Include a "valid proof of purchase" (sales receipt) identifying the Product purchased (Product model) and the date of purchase or receipt; and
3. Provide your name, complete and correct mailing address, and telephone number.
Other limitations
This warranty is the complete and exclusive agreement between you and VTech. It supersedes all other written or oral communications related to this Product. VTech provides no other warranties for this Product. The warranty excludes all descriptions of all of VTech's responsibilities regarding the Product. There are no other express warranties. No one is authorized to make modifications to this limited warranty and you should not rely on any such modification. State/Provincial Law Rights: This warranty gives you specific legal rights, and you may also have other rights, which vary from state to state or province to province.
Limitations: Implied warranties, including those of fitness for a particular purpose and merchantability (an unwritten warranty that the Product is fit for ordinary use) are limited to one year from the date of purchase. Some states/provinces do not allow limitations on how long an implied warranty lasts, so the above limitation may not apply to you. In no event shall VTech be liable for any indirect, special, incidental, consequential, or similar damages (including, but not limited to, lost profits or revenue, inability to use the Product or other associated equipment, the cost of substitute equipment, and claims by third parties) resulting from the use of this Product. Some states/provinces do not allow the exclusion or limitation of incidental or consequential damages, so the above limitation or exclusion may not apply to you.
Please retain your original sales receipt as proof of purchase.

1 CONNECT

This is an AC powered audio baby monitor. Connect the baby monitor to a non-switched electric outlet to power on.

Connect the baby monitor

When you have connected and turned on the baby unit and all the parent units, they will enter pairing mode automatically. It takes around 10 minutes for the pairing process to complete. When the parent unit and baby unit are successfully paired, both their power LEDs are on steadily. The baby monitor is ready to use.



NOTES

- Use only the power adapters supplied with this product.
- Make sure the baby monitor is not connected to a switch controlled electric outlet.
- Connect the power adapters in a vertical or floor mount position only. The adapters' prongs are not designed to hold the weight of baby monitor, so do not connect them to any ceiling, under the table, or cabinet outlets. Otherwise, the adapters may not properly connect to the outlets.
- Make sure the parent unit, the baby unit and the power adapter cords are out of reach of children.
- Make sure the **POWER** light is on after the power plug is fully inserted into the power jack of the baby unit.
- With audio reminder feature preset to on, the parent unit plays an audio reminder when it is connected to a baby unit.

2 BEFORE USE

NOTE

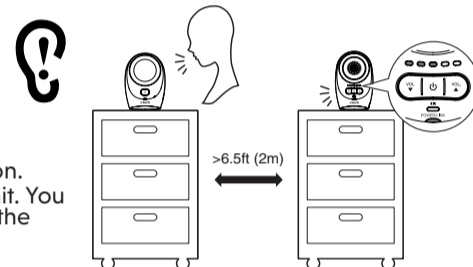
- This baby monitor is intended as an aid. It is not a substitute for proper adult supervision, and should not be used as such.

Test your baby monitor

You may test the baby monitor before initial use, and at regular times thereafter.

CAUTION

- For hearing protection, make sure the parent unit is more than 6.5 feet (2 meters) away from the baby unit. If you hear any high-pitched noise, move the parent unit further until the noise stops. You can also press **▼** on the parent unit to lower or mute the noise.



- Make sure your baby unit and parent unit are on.
- Speak towards the microphone of the baby unit. You will hear the sound at the parent unit, and see the visual sound indicators light up.

NOTE

- When the **POWER/LINK** LED light flashes, move the parent unit closer to the baby unit (observe the minimum distance of 6.5 feet / 2 meters). You can also check if the baby monitor is connected to a live power socket and switched on.

TIP

- Increase the speaker volume of the parent unit if you cannot hear the sounds transmitted from the baby units.

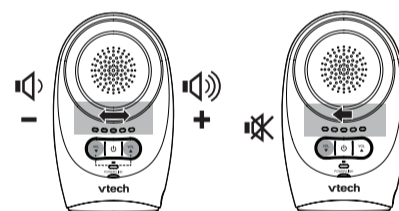
3 USING THE BABY MONITOR (CON'T)

To mute the speaker volume

- Press **▼** repeatedly until the volume reaches the minimum.

NOTES

- When the parent unit is in mute, the visual sound indicator will still indicate the sound detected from the baby unit.
- To unmute, press **▲** repeatedly until it reaches your desired volume.



Turn on or off the audio reminder

With audio reminder feature preset to on, the parent unit plays an audio reminder when it is connected to a baby unit. It reminds you to place the baby unit at least 3 feet (1 meter) away from your baby, and keep the cords out of the reach of children.

- Press and hold **▼** for 8 seconds when the parent unit is not in use. The visual sound indicators flashes for 3 times. The audio reminder is disabled.
- Press and hold **▲** for 8 seconds when the parent unit is not in use. The visual sound indicators flashes for 3 times. The audio reminder is enabled.

NOTES

- You can press **▼** or **▲** to adjust or mute the volume when the parent unit is playing the reminder.
- If the speaker volume of the parent unit is turned off, it will resume to the default volume level when the parent unit plays the reminder.

4 INSTALL BATTERIES FOR BACKUP USE (OPTIONAL)

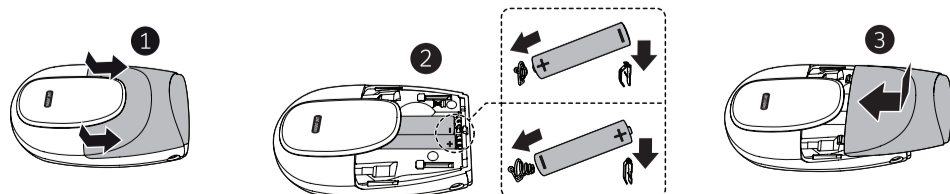
This is an AC powered baby monitor. If you want to move around the house with the parent unit for a few minutes, you can install two AAA alkaline batteries for backup use. Re-connect the baby monitor to a non-switched electric outlet once you are settled down.

NOTES

- Use 2 x AAA batteries (not included). Alkaline batteries are recommended. If you use other kind of batteries, the performance of the baby monitor varies.
- NO BATTERY RECHARGING** from the parent unit.
- Do not mix old and new batteries. Do not mix alkaline, standard (Carbon-Zinc) or rechargeable (Ni-Cad, Ni-Mh, etc) batteries.
- While you insert the batteries, make sure the polarities are correct.
- When the batteries are installed, the parent unit turns on.
- Replace the batteries when the **LOW BATTERY** light flashes on the parent unit, or you hear two beeps every 10 minutes.

Install the batteries as shown below.

- Press down on the battery compartment cover to slide it out.
- Insert two AAA alkaline batteries into the battery compartment, according to the polarity indications (+) and (-).
- Slide the battery compartment cover until it clicks into place.



Replace the battery

To replace the batteries, slide open the battery compartment cover, and then take out the batteries. Follow the previous steps to install the new batteries.

2 BEFORE USE (CON'T)

Positioning the baby monitor

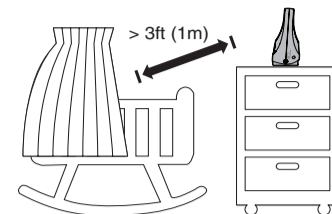
CAUTION

- Keep the baby unit out of the reach of your baby. Never place or mount the baby unit inside the baby's crib or playpen.

NOTE

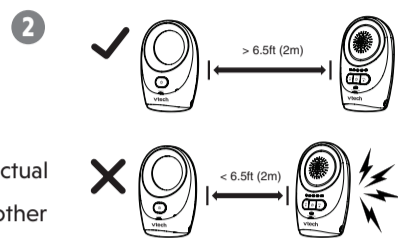
- To avoid interference from other electronic devices, place your baby monitor far away from devices such as wireless routers, microwaves, cell phones and computers.

- Place the baby units more than 3 feet (1 meter) away from your baby.
- Place the parent unit more than 6.5 feet (2 meters) away from the baby unit to avoid screaming noise.



CAUTION

- The default volume of your parent unit is **Level 3**, and the maximum volume is **level 5**. If you experience high-pitched screaming noise from your baby monitor while positioning:
 - Make sure your baby units and parent unit are more than 6.5 feet (2 meter) apart, OR
 - Turn down the volume of your parent unit.



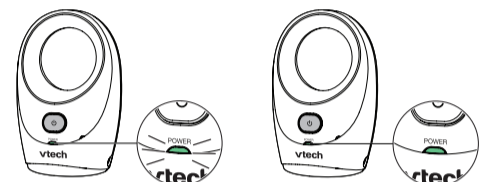
Operating range

The operating range of the baby monitor is up to 1,500 feet (450 meters) outdoors or 160 feet (50 meters) indoors. The actual operating range may vary depending on the environmental conditions and other interferences such as walls, doors and other obstructions.

3 USING THE BABY MONITOR

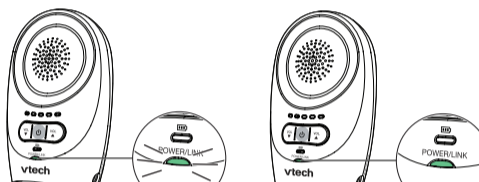
Power on or off the baby unit

- Press and hold **⏻** until the **POWER** light turns on.
- Press and hold **⏻** until the **POWER** light turns off.



Power on or off the parent unit

- Press and hold **⏻** until the **POWER / LINK** light turns on.
- Press and hold **⏻** until the **POWER / LINK** light turns off.



Adjust parent unit speaker volume

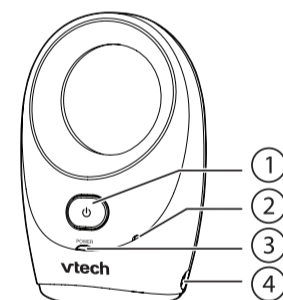
The speaker volume is preset to **Level 3** on the parent unit. You can adjust to your preferred sound level.

- Press **▼** to decrease the volume, and **▲** to increase the volume.

NOTE

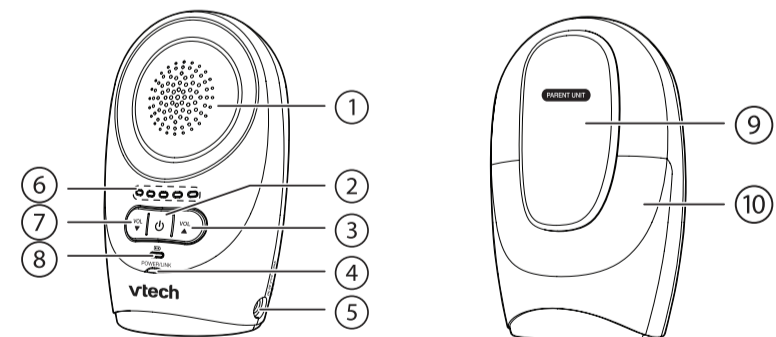
- If you continue to press **▼** or **▲** when the volume reaches the minimum or maximum setting, the parent unit will beep twice.

4 BABY UNIT OVERVIEW



- ⏻ (On/off)**
Press and hold to turn on or off the baby unit.
- Microphone**
- POWER light**
- Power jack**

5 PARENT UNIT OVERVIEW



- Speaker**
- ⏻ (On/off)**
Press and hold to turn on or off the parent unit.
- VOL ▲ (Volume up)**
Press to increase the speaker volume.
- POWER / LINK light**
- Power jack**
- Visual sound indicator**
Indicate the sound level detected by the baby unit or show the volume level during speaker volume setting.
- VOL ▼ (Volume down)**
Press to decrease the speaker volume.
Press repeatedly until the volume reaches the minimum to mute the parent unit.
- LOW BATTERY light**
- Belt clip**
- Battery compartment cover**

