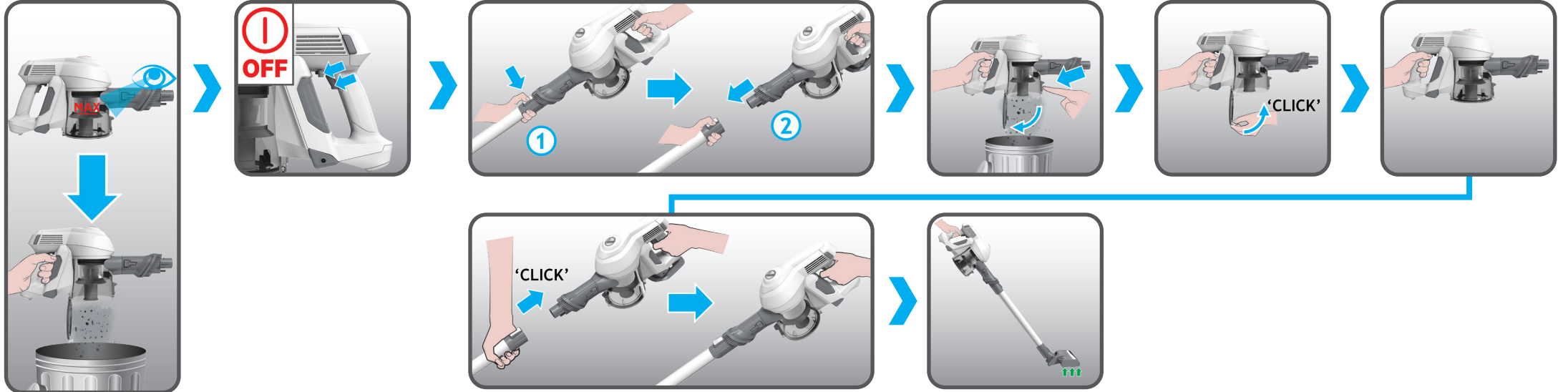
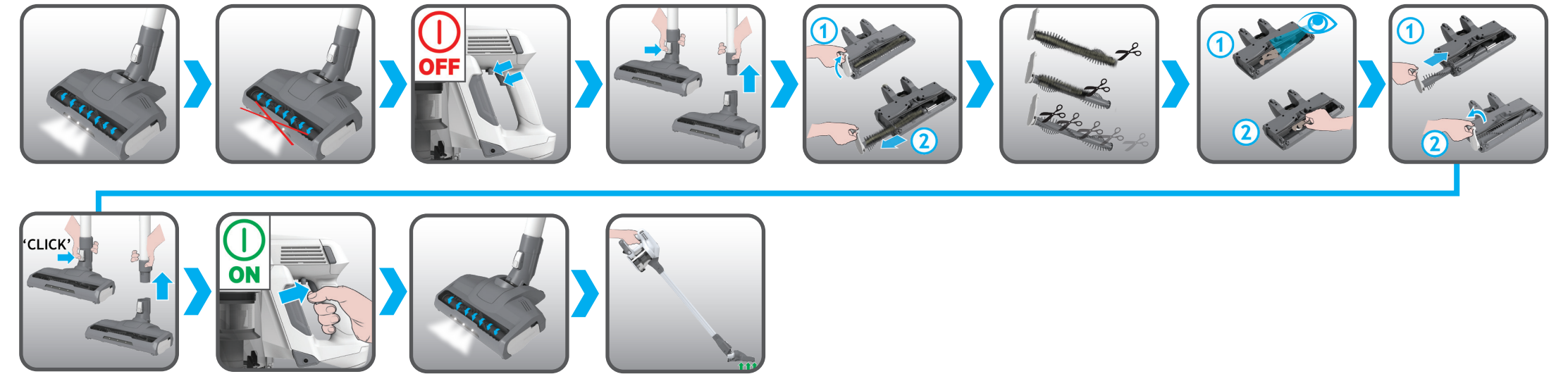


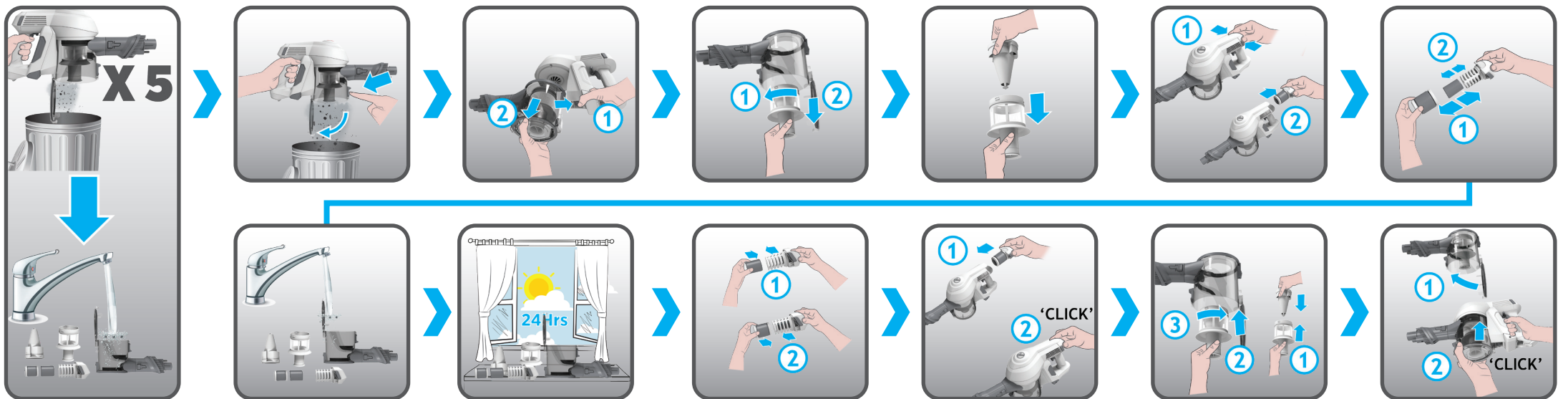
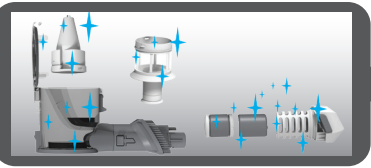
4



6



5



<a href="http://www.hoover.co.uk">www.hoover.co.uk</a>	<a href="http://www.hoover.fr">www.hoover.fr</a>	<a href="http://www.hoover.it">www.hoover.it</a>	<a href="http://www.hoover.de">www.hoover.de</a>	<a href="http://www.hoover.es">www.hoover.es</a>	<a href="http://www.hoover.al">www.hoover.al</a>	<a href="http://www.hoover.be">www.hoover.be</a>	<a href="http://www.hoover.bg">www.hoover.bg</a>	<a href="http://www.hoover.hr">www.hoover.hr</a>	<a href="http://www.hoover.cz">www.hoover.cz</a>
<a href="http://www.hoover.dk">www.hoover.dk</a>	<a href="http://www.hoover-baltics.com">www.hoover-baltics.com</a>	<a href="http://www.hoover.fi">www.hoover.fi</a>	<a href="http://www.hoover.gr">www.hoover.gr</a>	<a href="http://www.hoover.hu">www.hoover.hu</a>	<a href="http://www.hoover-baltics.com">www.hoover-baltics.com</a>	<a href="http://www.hoover-baltics.com">www.hoover-baltics.com</a>	<a href="http://www.hoover.ma">www.hoover.ma</a>	<a href="http://www.hoover.nl">www.hoover.nl</a>	<a href="http://www.hoover-norge.no">www.hoover-norge.no</a>
<a href="http://www.hoover.pl">www.hoover.pl</a>	<a href="http://www.hoover.pt">www.hoover.pt</a>	<a href="http://www.hoover.ro">www.hoover.ro</a>	<a href="http://www.hoover.ru">www.hoover.ru</a>	<a href="http://www.hoover.rs">www.hoover.rs</a>	<a href="http://www.hoover.sk">www.hoover.sk</a>	<a href="http://www.hoover.si">www.hoover.si</a>	<a href="http://www.hoover.se">www.hoover.se</a>	<a href="http://www.hoover.ch">www.hoover.ch</a>	<a href="http://www.hoover.com.tr">www.hoover.com.tr</a>
<a href="http://www.hoover.ua">www.hoover.ua</a>	<a href="http://www.hoover-overseas.com">www.hoover-overseas.com</a>								

\* GB - Content may vary according to your model. FR - Le contenu peut varier en fonction de votre modèle. DE - der inhalt kann je nach modell variieren. IT - I contenuti possono variare secondo il modello. NL - inhoud kan variëren volgens uw model. PT - o conteúdo pode variar de acordo com o modelo. ES - el contenido puede variar en base a su modelo. DK - indholdet kan variere i henhold til modellen. NO - innholdet kan variere avhengig av modellen. SE - innehåll kan variera beroende på modell. FI - sisältö saattaa vaihdella mallista riippuen. GR - το περιεχόμενο ενδέχεται να διαφέρει αναλόγα με το μοντέλο. RU - содержимое может меняться в зависимости от модели. PL - zawartość może być inna w zależności od modelu. CZ - obsah může lišit v závislosti na vašem modelu. SI - obsah sa može lišiti v závislosti od modela. TR - içerik modelinize göre farklılık gösterebilir.



- GB User Manual
- FR Guide de l'utilisateur
- DE Bedienungsanleitung
- IT Manuale d'uso
- NL Gebruikershandleiding
- PT Manual de Instruções
- ES Guía del usuario
- DK Brugervejledning
- NO Bruksanvisning
- SE Instruktionsmanual
- FI Käyttöohje
- GR Οδηγίες Χρήσεως
- RU Руководство пользователя
- PL Instrukcja Obsługi
- CZ Návod k obsluze
- SI Navodila Za Uporabo
- TR Kullanım Kılavuzu

GB - Please read the 'Instructions for Safe Use and Fittings' booklet before using your product. FR - Veuillez lire le paragraphe « Instructions De Sécurité D'utilisation Et De Raccordement » avant d'utiliser votre produit. DE - Bitte lesen Sie vor dem Gebrauch des Geräts aufmerksam die „Bedienungsanleitung zur sicheren Benutzung“. IT - Leggere con attenzione il libretto "Istruzioni Per Un Uso Sicuro E Per Il Montaggio Degli Accessori Opzionali" prima di utilizzare il prodotto. NL - Lees 'Instructies Voor Veilig Gebruik En Aansluitingen' voor u het produkt in gebruik neemt. PT - Por favor leia o manual "Instruções Para Utilização E Instalação Seguras" antes de começar a usar o produto. ES - Por favor lea las "instrucciones Para Un Uso Seguro Y Para El Montaje" antes de utilizar el producto. DK - Læs venligst vejledningen "Instruktioner For Sikker Brug Og Samling", inden du tager produktet i brug. NO - Vennligst les veiledningen "Instruksjoner For Sikker Bruk Og Montering" før du bruker produktet. SE - Var vänlig läs "Instruktioner för säker användning" innan ni använder denna produkt. FI - Tutustu ennen tuotteen käyttöä "lisävarusteiden Turvallisen Käytön Ja Asennuksen Ohjeet" ohjeeseen. GR - Παρακαλώ διαβάστε την ενότητα 'Οδηγίες Ασφαλούς Χρήσεως Και Εξαρτημάτων' στο Βιβλίο οδηγιών, πριν χρησιμοποιήσετε το προϊόν. RU - Перед использованием прибора необходимо ознакомиться с «Инструкция По Безопасному Использованию И Применению». PL - Przed użyciem produktu, proszę zapoznać się z Instrukcją Bezpiecznego Użytkowania I Akcesoriów. CZ - Před použitím výrobku si důkladně přečtěte a dodržujte pokyny v brožuře "návod K Bezpečnému Použití A Upevnění". SI - Prosim Preberite Navodila Za Varno Uporabo In Sestavo Dodatnih Pripomočkov. TR - Lütfen ürünü kullanmadan önce kullanma kılavuzundaki 'güvenli Kullanım Ve Donanım' bölümünü okuyunuz.



# 1

'CLICK'

'CLICK'

This section illustrates the assembly of the main unit. It shows the motor head being attached to the main tube with a 'CLICK' sound. Below, various accessories are shown being attached to the end of the tube, also with a 'CLICK' sound. The accessories include a crevice tool, a motorized head, a long extension tube, and a motorized floor head.

This grid shows various accessories and their applications. The accessories are: a motorized head, a crevice tool, a motorized head with a different attachment, a long extension tube, a motorized head with a different attachment, a motorized head with a different attachment, a motorized head with a different attachment, and a motorized head with a different attachment. The applications are shown in photos: a motorized head on a carpet, a crevice tool on a wooden floor, a motorized head on a sofa, a motorized head on a car seat, a motorized head on a car dashboard, a motorized head on a car seat, and a motorized head on a car seat.

# 2

This section illustrates the charging process and battery levels. It shows the main unit being plugged into a power outlet. The charging time is indicated as 6hrs. The battery level is shown as 100%. The battery level is also shown as <5% and as a warning symbol. The battery level is also shown as a warning symbol.

\* GB - Content may vary according to your model. FR - Le contenu peut varier en fonction de votre modèle. DE - der inhalt kann je nach modell variieren. IT - I contenuti possono variare secondo il modello. NL - inhoud kan variëren volgens uw model. PT - o conteúdo pode variar de acordo com o modelo. ES - el contenido puede variar en base a su modelo. DK - indholdet kan variere i henhold til modellen. NO - innholdet kan variere avhengig av modellen. SE - innehåll kan variera beroende på modell. FI - sisältö saattaa vaihdella mallista riippuen. GR - το περιεχόμενο ενδέχεται να διαφέρει ανάλογα με το μοντέλο. RU - содержимое может меняться в зависимости от модели. PL - zawartość może być inna w zależności od modelu. CZ - obsah se může lišit v závislosti na vašem modelu. SI - obsah sa može lišiti v závislosti od modela. TR - içerik modelinize göre farklılık gösterebilir.

# 3

This section illustrates the operation and mode selection. It shows the main unit being turned on and off. The Turbo Mode and Eco Mode are shown. The Turbo Mode is selected by pushing the button once ('PUSH x1'). The Eco Mode is selected by pushing the button twice ('PUSH x2'). The Turbo Mode is shown with a 'TURBO MODE' label. The Eco Mode is shown with an 'ECO MODE' label. The Turbo Mode is shown with a 'TURBO MODE' label. The Eco Mode is shown with an 'ECO MODE' label.